



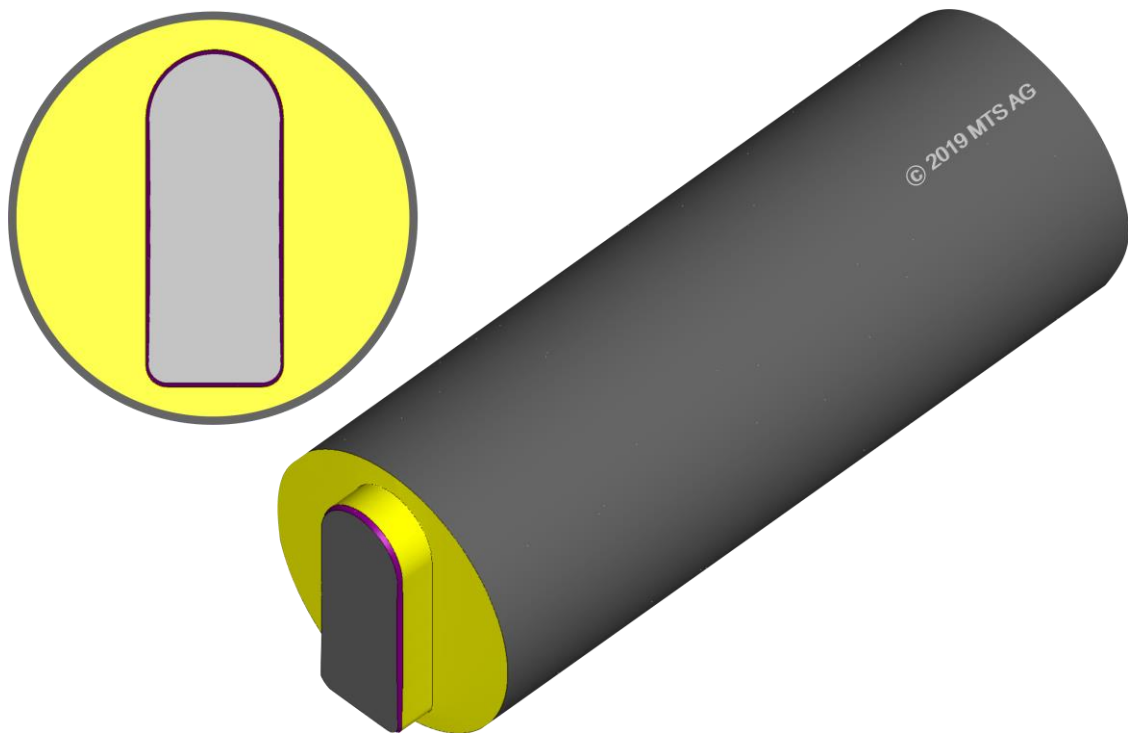
MTS AG  
Mathematisch-Technische-Software

*tool-kit* PROFESSIONAL by MTS AG

# Software-Modul

## Spezifikation „Punches/UMENU“

Stand: 10.08.20



MTS AG  
Rheinstraße 81  
CH-4133 Pratteln 1  
Tel.: 0041 / 61 81 59 130  
Fax.: 0041 / 61 81 59 139  
e-mail: [info@mtsag.net](mailto:info@mtsag.net)  
[www.mtsag.net](http://www.mtsag.net)



**MTS AG**  
Mathematisch- Technische Software

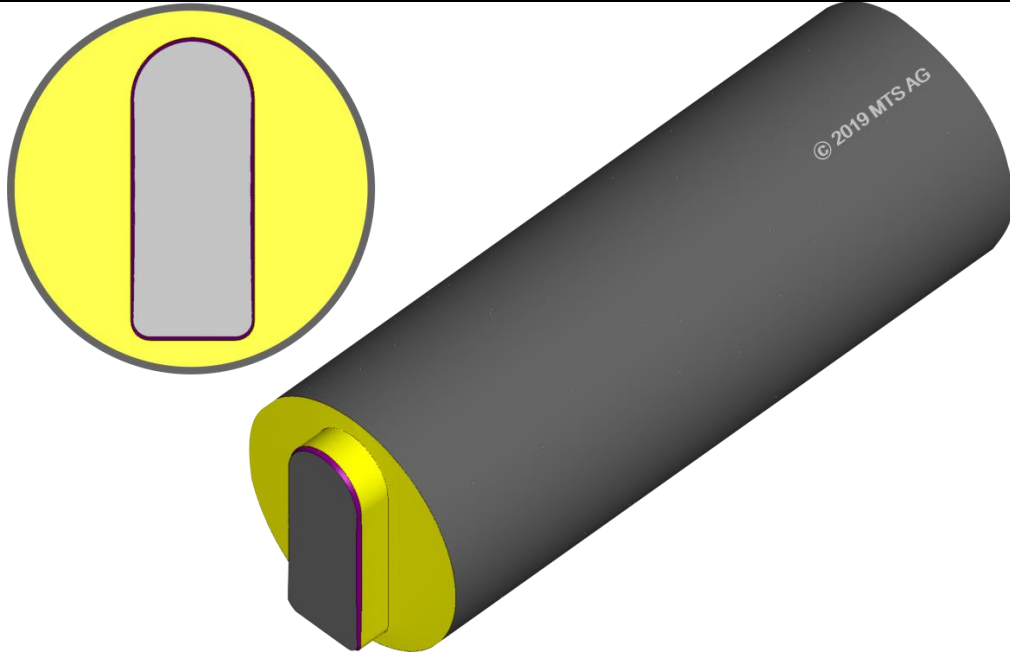


MTS AG

Mathematisch-Technische-Software

## 14.Punches

UMENU



### 14.1 Basic Modul Punches

- **Workpiece:**  
Circular grinding of any radial profile  
Any axial profile (shank)
- **Profile:**  
Standard profiles (integrated database)  
Special profiles by integrated CAD-System for profile-construction  
DXF-Import  
Central/excentrical profiles
- **Machining:**  
Polygon-preparation  
Profile roughing  
Profile finishing  
Profile polishing
- **Grinding Procedure:**  
Deep grinding  
Circular grinding (equal infeed)  
Circular grinding (dynamical infeed)  
Surface grinding.
- **Torx geometrie**