



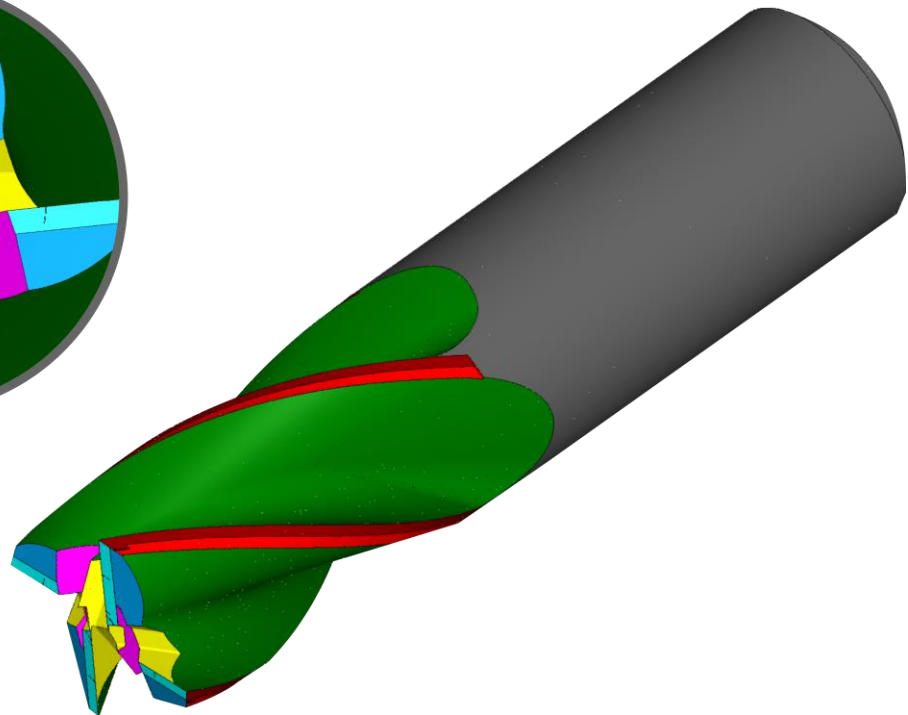
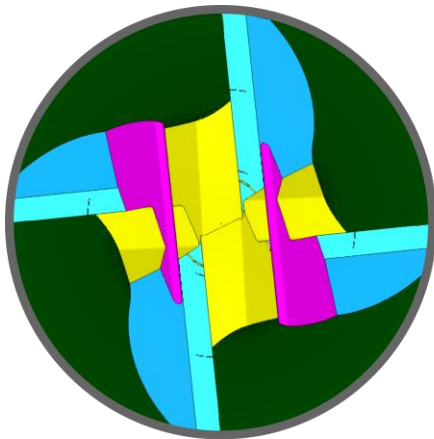
MTS AG
Mathematisch-Technische-Software

tool-kit PROFESSIONAL by MTS AG

Software-Modul

Spezifikation „Cutting Inserts/WMENU“

Stand: 10.01.20



MTS AG
Rheinstraße 81
CH-4133 Pratteln 1
Tel.: 0041 / 61 81 59 130
Fax.: 0041 / 61 81 59 139
e-mail: info@mtsag.net
www.mtsag.net



MTS AG

Mathematisch- Technische Software

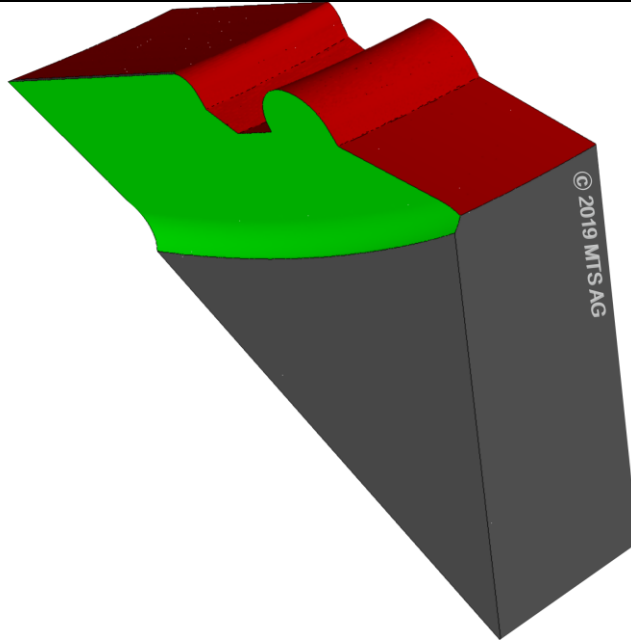


MTS AG

Mathematisch-Technische-Software

15.1 Cutting Inserts

WMENU



15.1 Basic Modul Cutting Inserts

- **Tool spectrum**
all convex insert's profile
outer surface with clearance / chamfering
tools with longitudinal profile
tools with transversal profile
tools with frontal profile
tools with profile combinations
- **Blank construction**
blank by standard selection-table
blank by DXF-definition
- **Machining of outer surface**
Machinings:
Roughing
Finishing
Polishing.
- **Procedures:**
Cylindrical grinding
Linear grinding
Plunging

- **Chamfering of outer surface**
Front chamfering
Rear chamfering
- **Profile definition and machining**
Free constructed cutting profiles
Orientation: Longitud., transversal, frontal
Profile combinations
- **Preparing of profile cutting edge:**
Roughing
Finishing
Chamfering of cutting edge
- **Flute machining**
Two different procedures:
Logitudinal grinding
Transversal grinding (scalping)
- **Recessing and special features**
Creating recesses and special
geometrical elements will be done by
MTS-module „Open Procedure“.